

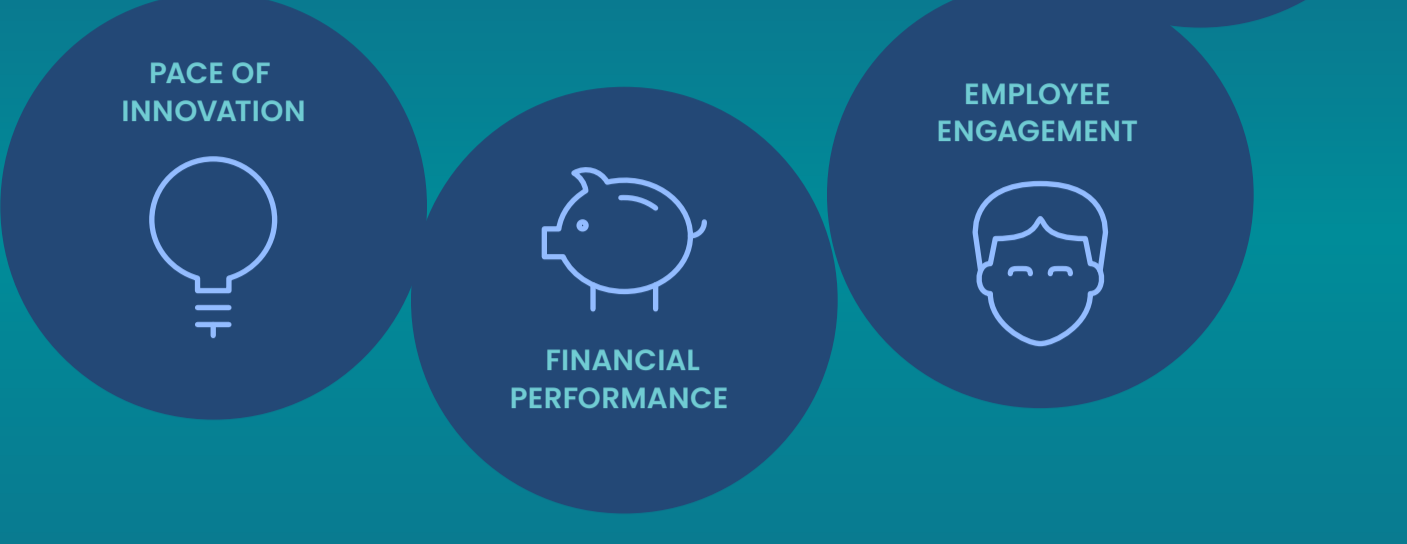
# Successful businesses prioritize more perfect software. Does yours?

Research by New Relic has found that more perfect software—which is resilient and dynamic at delivering outstanding customer experiences—drives business success.

In fact, our More Perfect Software Leaders, those companies that have made the most progress delivering software excellence, report higher revenue growth over the past three years than the rest.

This accelerated performance sets the leaders apart from the majority of firms, but particularly the laggards—those firms which have made the least progress delivering software excellence.

## More Perfect Software Leaders say they're ahead in:

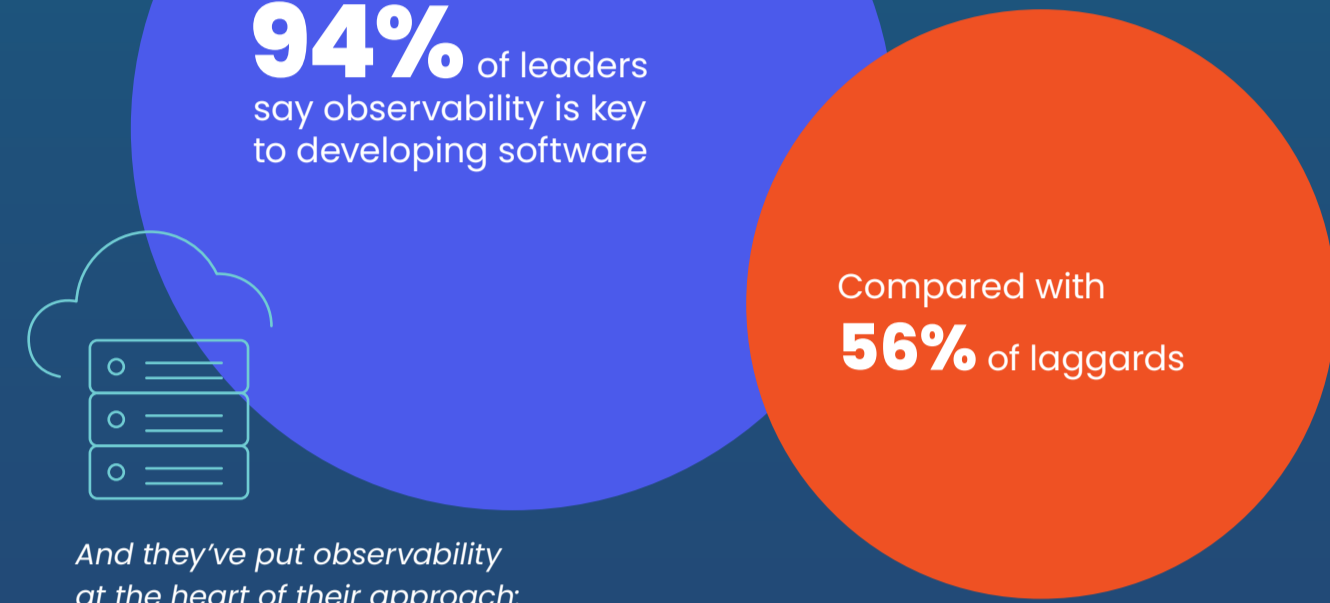


## What can we learn from these leaders?

Software development and management is critical to success



Observability is vital



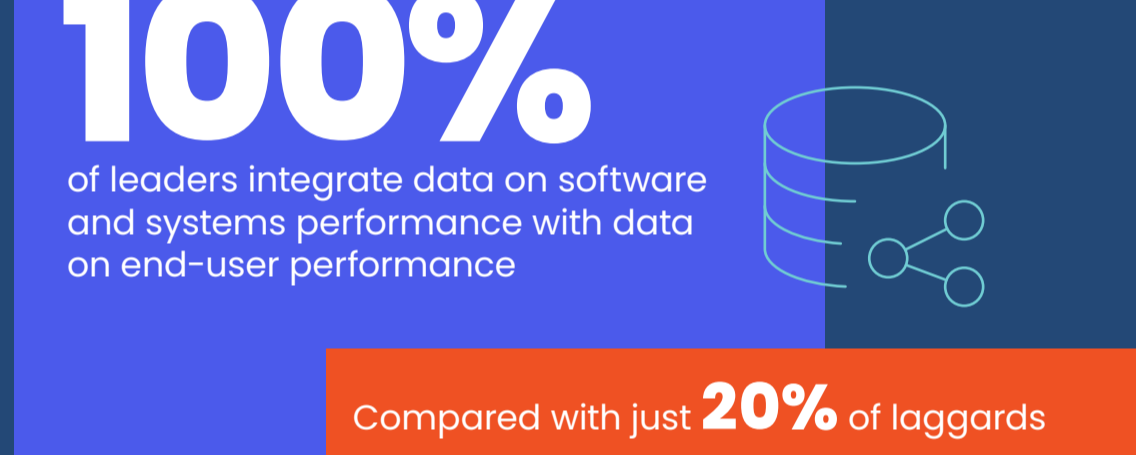
And they've put observability at the heart of their approach:

**78%** of leaders find out about system and software interruptions via observability platforms vs. from customers or employees

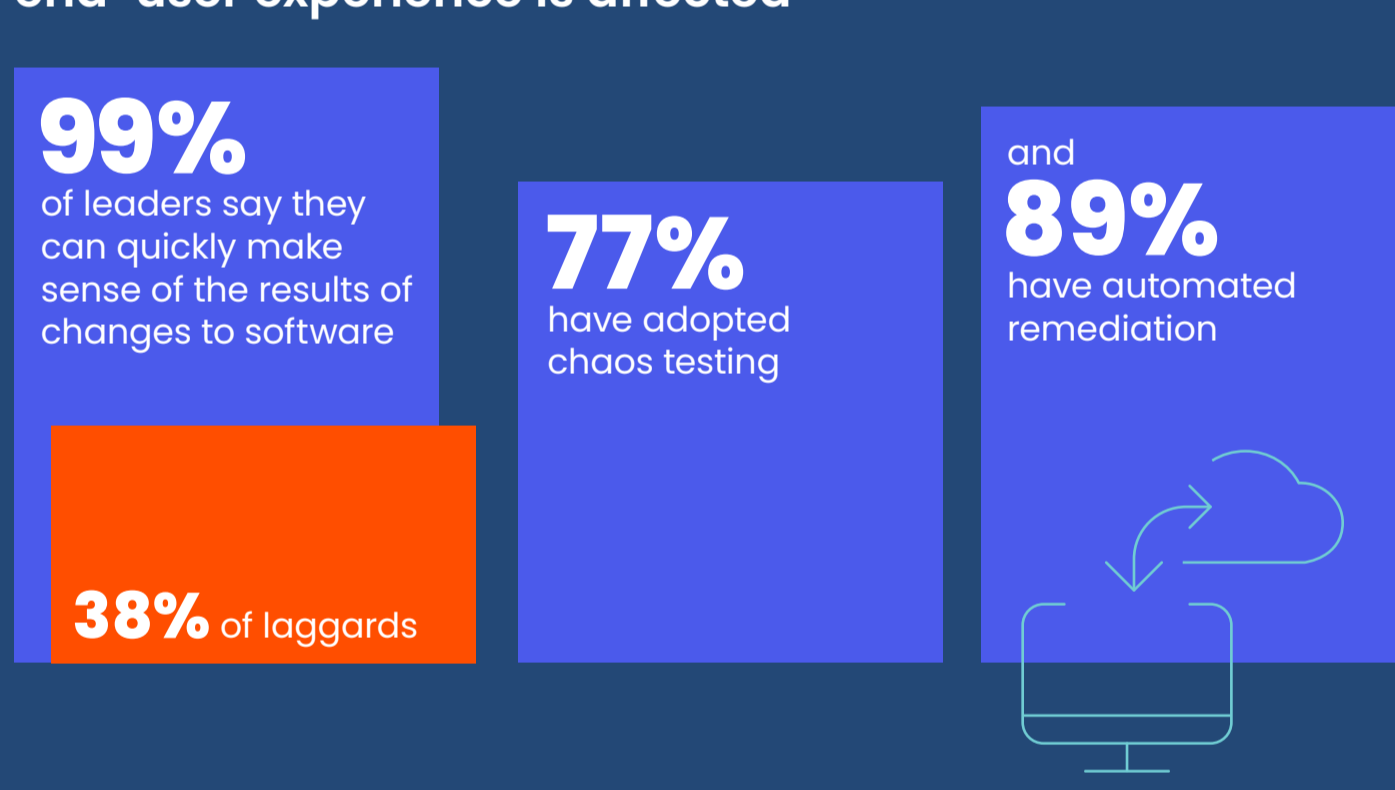
"Observability means being able to make changes and not have to worry about breaking things. If you don't have confidence that you can make a change without affecting a bunch of different things, you're not going to be making those changes, and therefore you're not going to be innovating."

Leo Guinan  
DevOps Engineer, Fuse by Cardinal Health

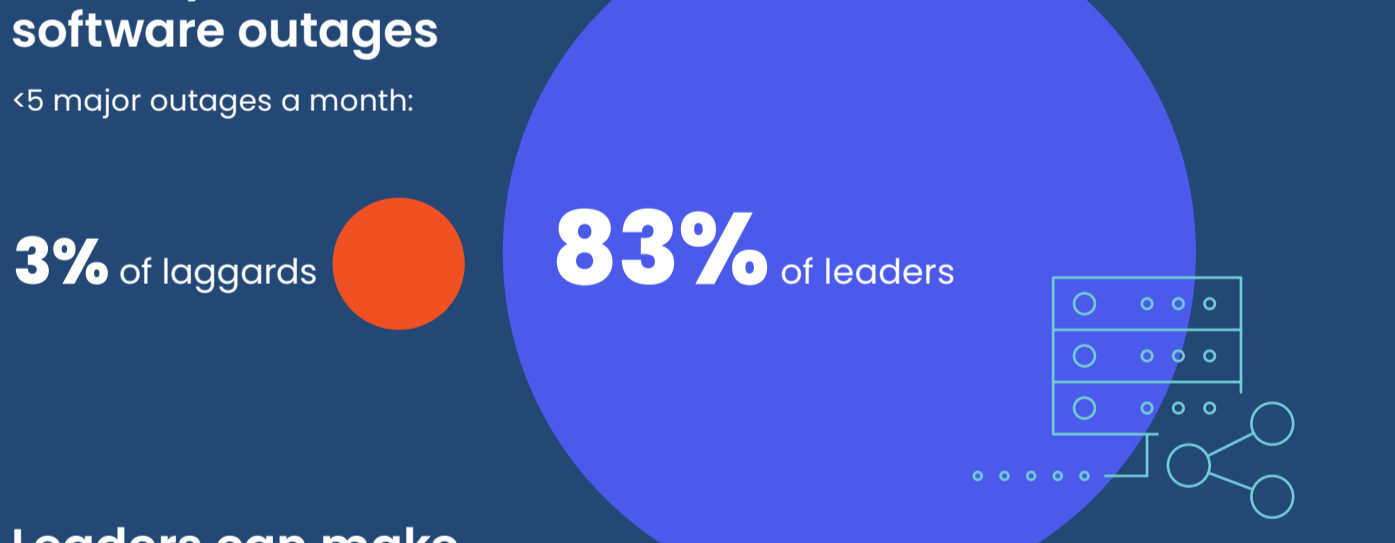
Connecting data is key



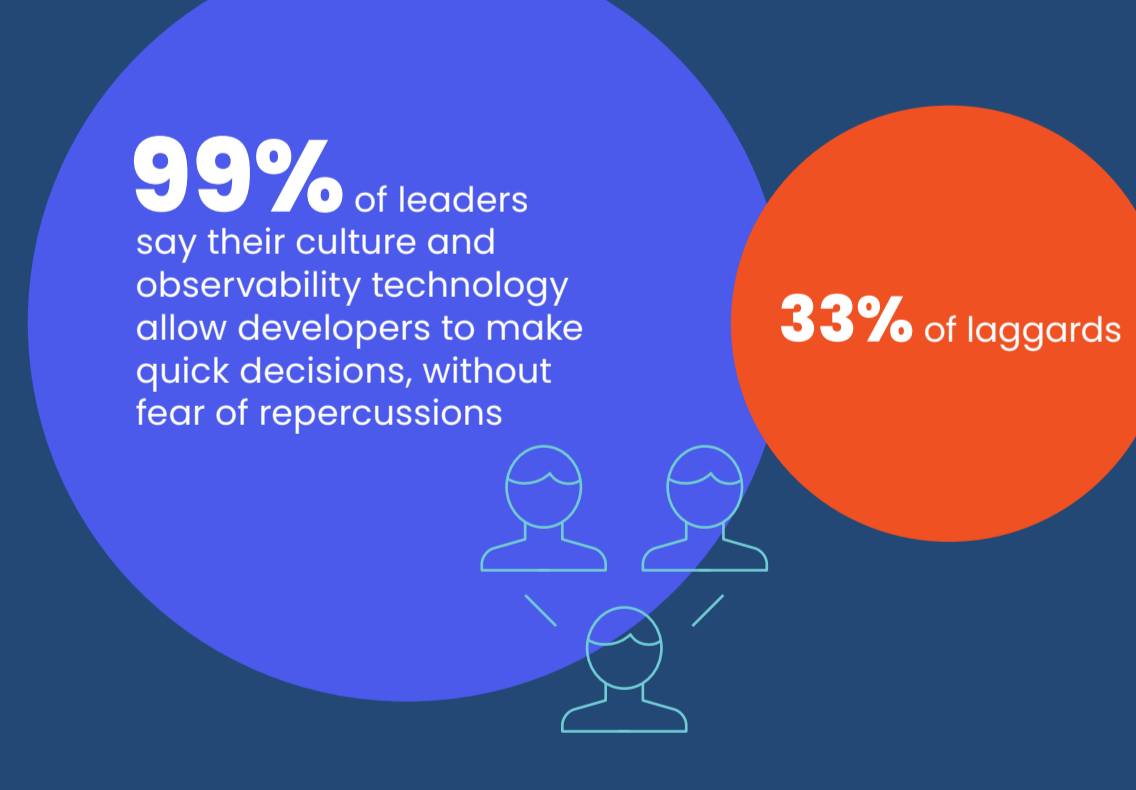
When leaders make changes to software, they can quickly understand how the end-user experience is affected



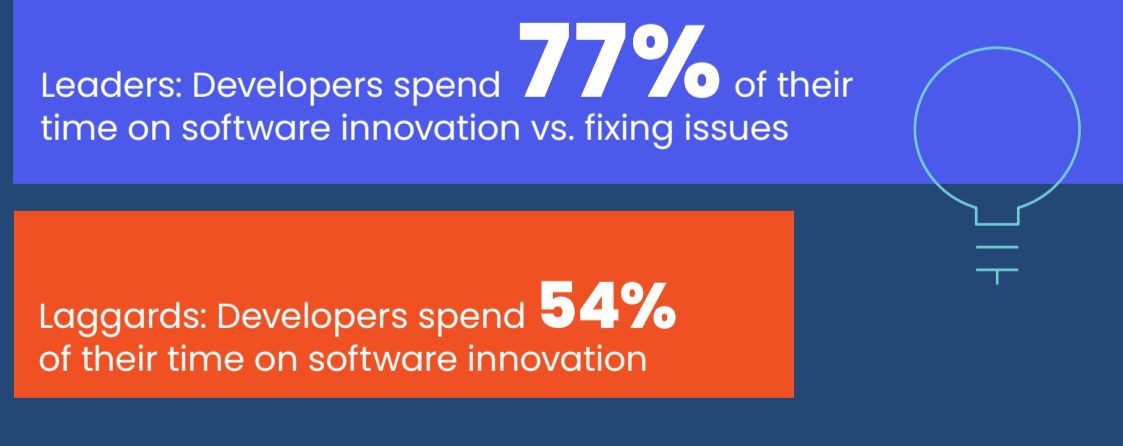
And they experience fewer systems and software outages



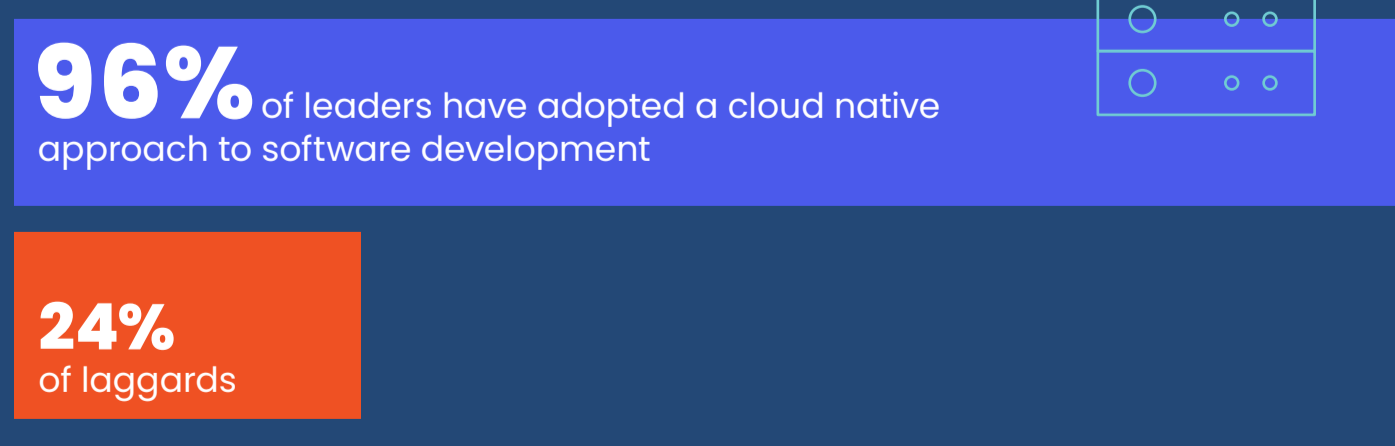
Leaders can make decisions with speed



Which gives them more time to innovate



They have modernized with cloud



"Developing our cloud native capabilities is the No. 1 priority for our IT team today."  
Sreesh Inguva  
CTO, Cloud and Digital Transformation, Fujitsu America

The business success of New Relic's More Perfect Software Leaders shows that software development and life cycle management are central to outperforming the competition.

Are you a leader or a laggard?

To find out, use the More Perfect Software benchmarking tool at <https://emea.focusvision.com/survey/selfserve/21b6/200613>